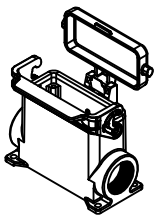
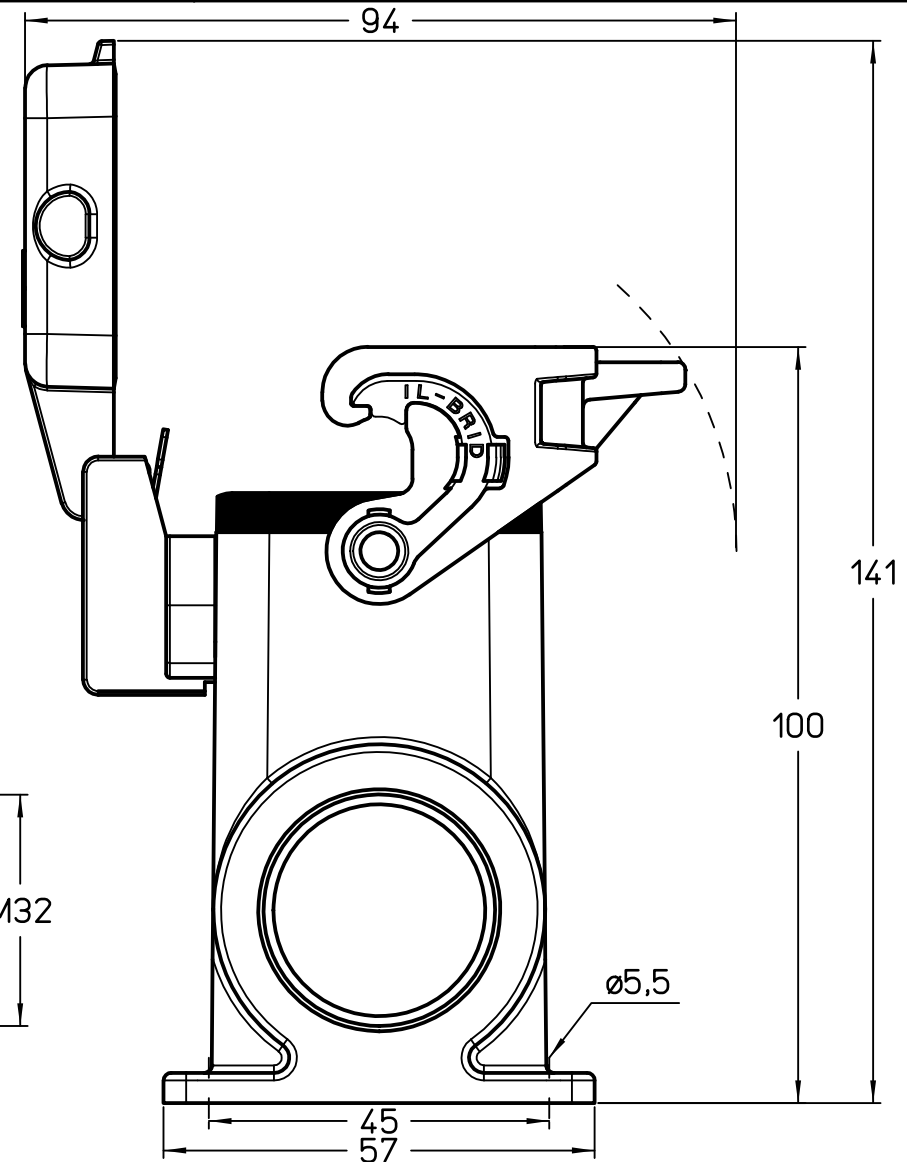
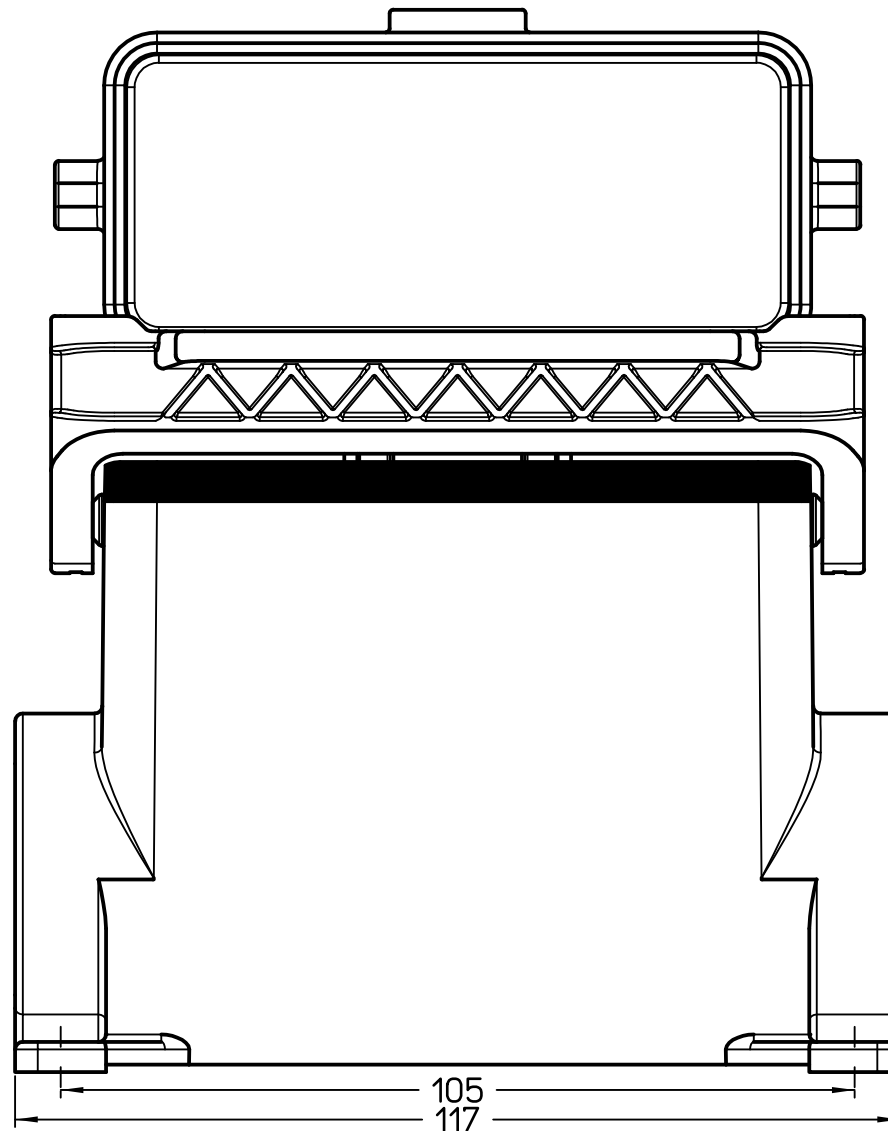


Diritti riservati All rights reserved



	Dimensions in mm
Original Size A4	
Date 09/03/23	
Sign. G. Renna	

Simplified representation with dimensions without tolerance

MLAP 16 LS32
surface mounting housing, size "77.27", high construction, 1xM32 side entry,
with 1 IL-BRID lever and cover

Scale
1:1

